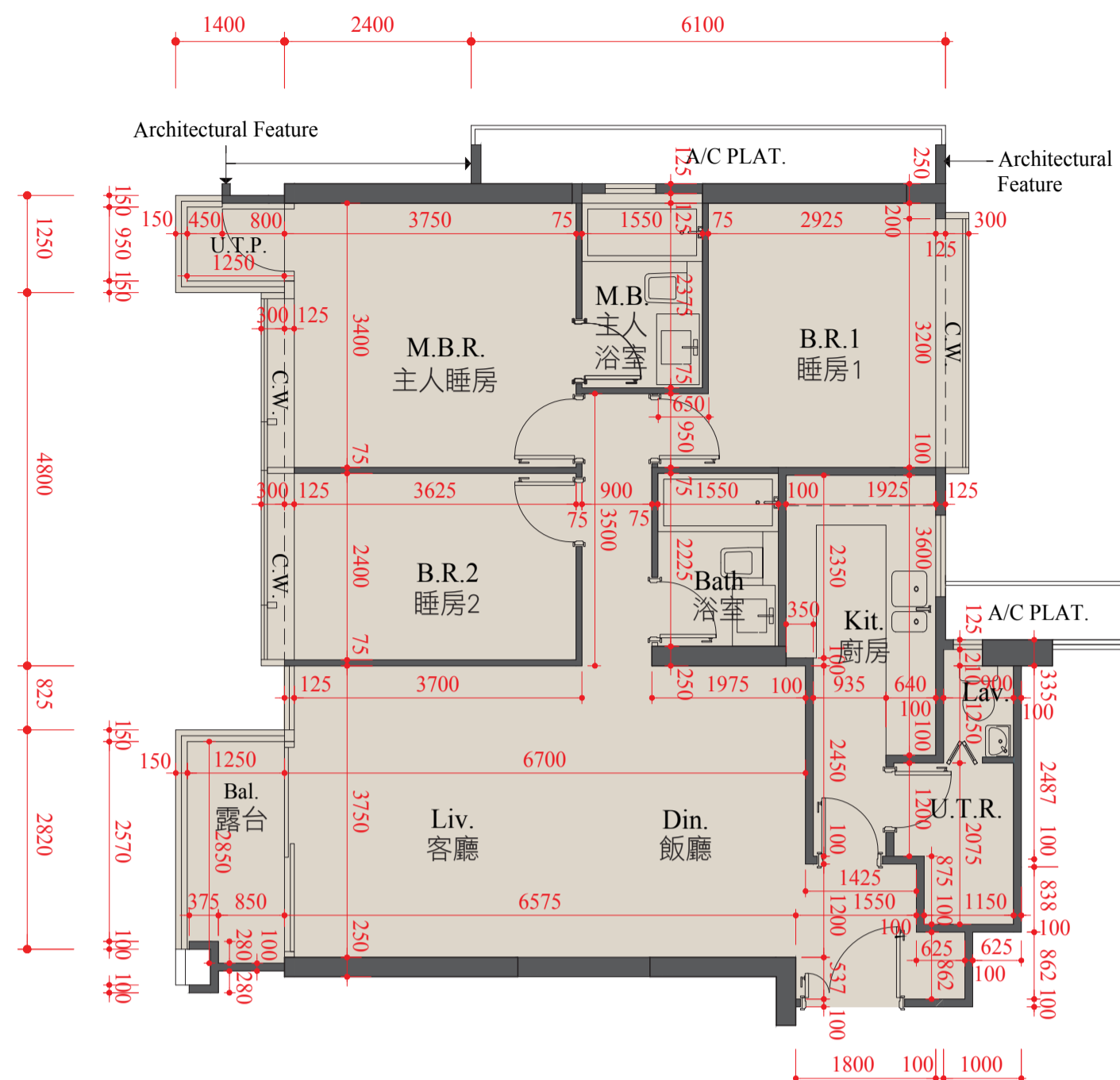
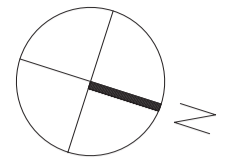


Block 5  
5座  
Flat A 16/F Floor Plan  
16楼A单位平面图



Floor-to-Floor Height (mm) : 2750, 3100  
层与层之间的高度(毫米)

SCALE: 0M/米 5M/米  
比例:

Legend 图例:

A/C PLAT.	= Air-Conditioning Platform	= 空调平台	Kit.	= Kitchen	= 厨房
Architectural Feature	= Architectural Feature	= 建筑装饰	Lav.	= Lavatory	= 洗手间
B.R.	= Bedroom	= 睡房	Liv.	= Living Room	= 客厅
Bal.	= Balcony	= 露台	M.B.	= Master Bathroom	= 主人浴室
Bath	= Bathroom	= 浴室	M.B.R.	= Master Bedroom	= 主人睡房
C.W.	= Curtain Wall	= 幕墙	U.T.P.	= Utility Platform	= 工作平台
Din.	= Dining Room	= 饭厅	U.T.R.	= Utility Room	= 多用途房

The internal areas of the residential properties on the upper floors will generally be slightly larger than those on the lower floors because of the reducing thickness of the structural walls on the upper floors.

因住宅物业的较高楼层结构墙的厚度递减，较高楼层的内部面积，一般比较低楼层的内部面积稍大。

Notes:

- There may be architectural features and/or exposed pipes on external walls and/or windows of some of the floors. For details, please refer to the latest approved building plans.
- Common drainage pipes enclosed in cladding are located adjacent to balcony and/or utility platform of some residential units. For residential units with flat roof and/or roof, common drainage pipes will run through the flat roof and/or roof.
- The condensers of the split-type air-conditioners are installed on A/C platforms / A/C plant room / flat roofs (where applicable).
- There are ceiling bulkheads in living/dining rooms, bedrooms, utility rooms, corridors and/or kitchens of some residential units for the air-conditioning system and/or M&E services.
- The internal ceiling height within residential units may vary due to structural, architectural and/or decoration design variations.
- Some louvers that are installed at false ceilings may not be indicated on the floor plans.
- Balcony and utility platform are non-enclosed areas.
- Symbols of fittings and fitments such as bathtub, sink, water closet, shower, sink counter, etc. are prepared based on the latest approved building plans and are for general indication only.
- Floor-to-floor height of residential property refers to the height between the top surface of structural slab of a floor and the top surface of the structural slab of its immediate upper floor.
- The thickness of floor slabs (excluding plaster) of the residential property is 150 mm.
- The dimensions in the floor plan are all structural dimensions in millimeter.
- The floor plan is for reference only. Please refer to the Sales Brochure for details.

备注:

- 部份楼层外墙及/或窗户设有建筑装饰及/或外露喉管，详细资料请参考最新批准的建筑图则。
- 部份住宅单位的露台及/或工作平台侧之外牆装饰板内设有公用喉管。公用喉管亦安装於部份连平台及/或天台住宅单位之平台及/或天台内。
- 分体式冷气机的冷凝器设于冷气机平台/冷气机房/平台(如适用)。
- 部份住宅单位客/饭厅、睡房、多用途房、走廊及/或厨房的装饰横梁装置冷气喉管及/或其他机电设备。
- 住宅单位的天花高度将会因应其结构、建筑设计及/或装修设计上的需要而有差异。
- 部份百叶窗安装于假天花之上且没有于平面图显示。
- 露台及工作平台为不可封闭的地方。
- 楼面平面图上所显示的装置符号，如浴缸、洗涤盆、座厕、花洒、洗涤盆柜等乃按最新的经批准的建筑图则绘制，只作一般示意用途。
- 住宅物业的层与层之间高度指该楼层之石屎地台面与上一层石屎地台面之高度距离。
- 住宅物业的楼板(不包括灰泥)的厚度为150毫米。
- 平面图所列之数字为以毫米标示之建筑结构尺寸。
- 平面图仅供参考。详情请参阅售楼说明书。